

PART III (Bass Clef)
(Trombone, Baritone)
Rock and roll

LOUIE, LOUIE

By RICHARD BERRY
Arranged by JOHN WASSON

4.

Musical score for 'LOUIE, LOUIE' in bass clef. It consists of three staves of music. The first staff starts with a box containing the number '4' and a measure with a '3' above it. The music is in 4/4 time and features a 'Rock and roll' style. Dynamics include *f* (forte) and *mf* (mezzo-forte). Measure numbers 1 through 24 are indicated. A 'Tacet last time' instruction is placed above measure 21. The piece ends with a *ff* (fortissimo) dynamic in measure 24.

© 1957 WINDSWEPT PACIFIC ENTERTAINMENT CO. d/b/a LONGITUDE MUSIC CO. Copyright Renewed
This Arrangement © 1996 WINDSWEPT PACIFIC ENTERTAINMENT CO. d/b/a LONGITUDE MUSIC CO.

All Rights Reserved

SMOKE ON THE WATER

By HANS SOMMER
Arranged by JOHN WASSON

5.

Driving rock

Musical score for 'SMOKE ON THE WATER' in bass clef. It consists of three staves of music. The first staff starts with a box containing the number '5' and a measure with a '4' above it. The music is in 4/4 time and features a 'Driving rock' style. Dynamics include *f* (forte) and *ff* (fortissimo). Measure numbers 1 through 29 are indicated. The score includes first and second endings (marked 1. and 2.) and a 'D.S. al Fine (Opt.)' instruction. The piece concludes with a 'Fine' marking and a *ff* dynamic in measure 29.

© 1987 YA YA MUSIC (BUMA) All Rights on behalf of YA YA MUSIC for the World Controlled by
WARNER BROS. MUSIC HOLLAND B.V. (BUMA)

All Rights in the Western Hemisphere Administered by WB MUSIC CORP. (ASCAP)
All Rights Reserved

MBC9607

ВЫШЕШЬ С НАМИ, ГОСПОДИН НАШ

Trombone

$\text{♩} = 90$

1 2 3 4

5 6 7 8 9 10

11 12 13 14 15 16

17 18 19 20 21 22

23 24 25 26 27 28

29 30 31 32 33

34 35

f *mf* *mf* *mp* *f* *mf* *mp* *f*

Trombone 2

Star Spangled Banner

[Composer]

The musical score for Trombone 2 consists of four staves. The first three staves contain musical notation with various annotations. The first staff has two 'NB' markings above it, with arrows pointing to specific notes. The second staff has three 'NB' markings above it, with arrows pointing to notes. The third staff has two 'NB' markings above it, with arrows pointing to notes. The fourth staff is mostly blank, with a few notes at the beginning and a fermata over the final note.

TROMBONE/EUPHONIUM

BAND CHEERS I

Arr. by HILTON

TERPASY!



TWILIGHT ZONE



13

DEAGNET

DES IAE



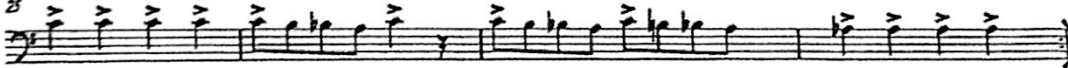
21

IMPERIAL MARCH



25

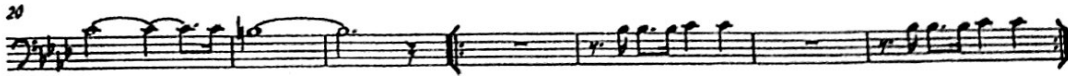
BIG ADVENTURE



TROMBONE

BAND CHEERS II

REV. BY NELSON



TROMBONE
BARITONE B.C.
ELECTRIC BASS

NOTRE DAME VICTORY MARCH

J.F. Shea & M.J. Shea
arr. by Andy Clark

Brisk Pep Band Tempo

058-2624-00

ff *f* *ff* *mf* *f* *ff*